

Off-campus access to the Nyenrode library's 'online information sources'

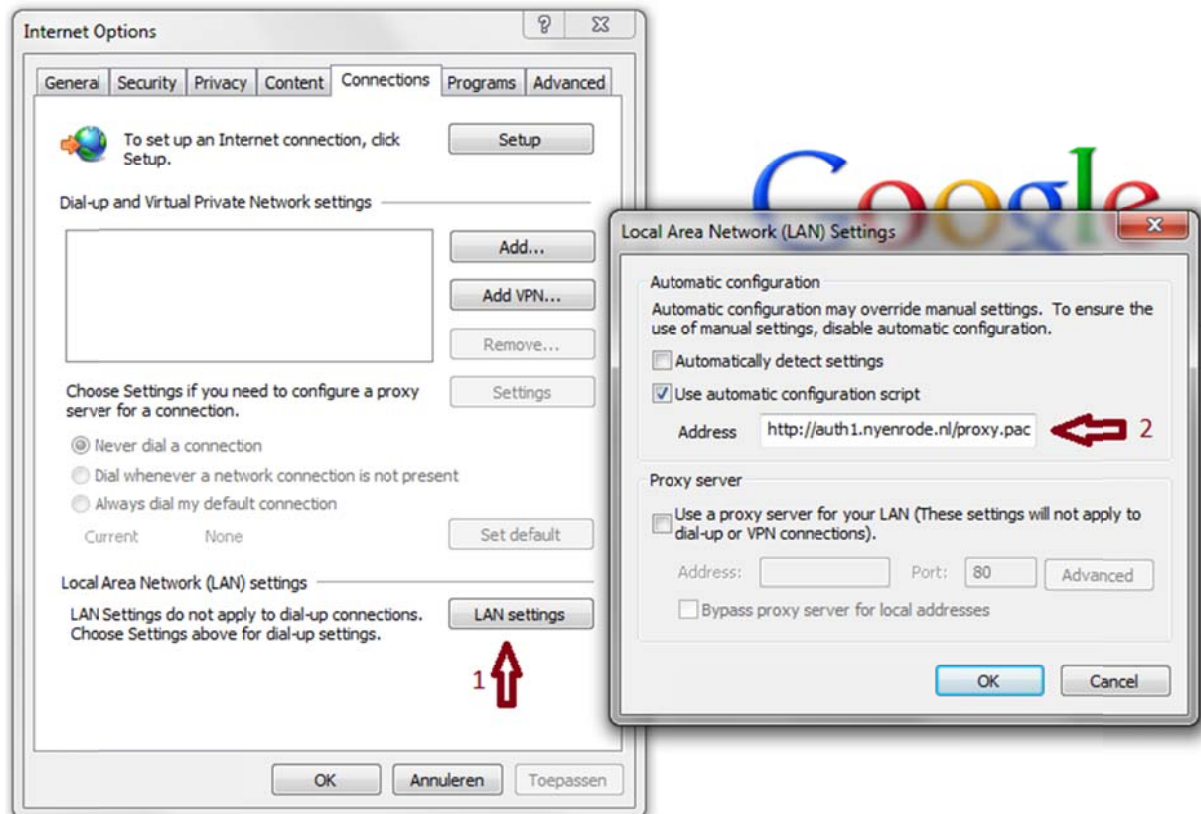
When on-campus you can access the 'online information sources' on the library website freely. If you would like to access these 'online information sources' **off-campus** you need to follow this manual.

(These settings are for Internet Explorer; for Firefox and Safari see **Extra Information** on page 3)

One-time browser setting for Internet Explorer:

Open your Internet Explorer and go to: 'Tools', 'Internet Options', 'Connections'. Now click on 'LAN Settings' (**arrow 1**), select 'Use automatic configuration script' and fill in **exactly** this:

http://auth1.nyenrode.nl/proxy.pac (**arrow 2**). Then click OK 2 times.




Now your browser is set to use our proxy server whenever you need an online information source.

How to logon and get access?

Goto <http://library.nyenrode.nl> and click the **Logon for off-campus access >** button (see picture)

Search
Find the information you need in one of the Nyenrode Library's online databases, catalogs and selected websites:

[Find online information sources](#)

 [Logon for off-campus access >](#)

Frequently used
[Catalog Nyenrode Library](#)
[List of Online Journals](#)
[EBSCO Business Source Complete](#)
[Mint Global \(European edition\)](#)
[More...](#)

Go directly to
[Opening hours](#)
[Tariffs](#)
[Renew loan period](#)
[Interlibrary Loan](#)
[Nyenrode journal rating list](#)
[Table of contents service](#)
[Online survey software](#)
[Library introductions](#)

On the next page choose the right logon link for you and you should get a Windows Security login box (see picture below) where you should fill in your Nyenrode credentials.



When successfully logged on you will be redirected to the library information sources page and you should be able to access the needed online information sources. If not, see the **Troubleshooting** below:

Troubleshooting (possible problems, causes and solutions):

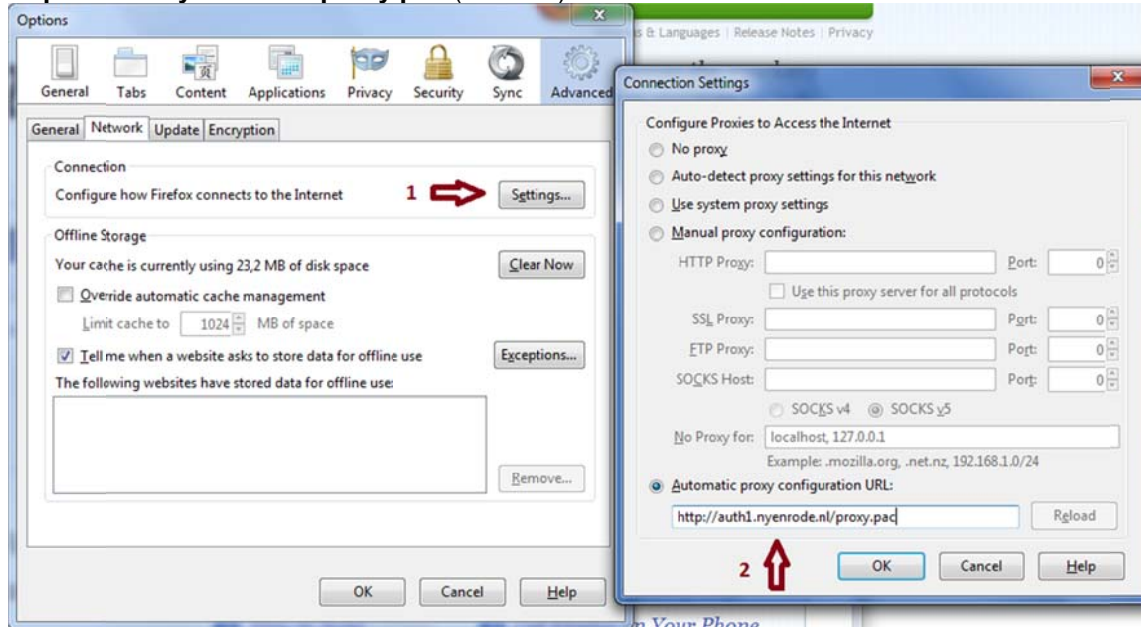
- 1. Problem:** Cannot logon.
Cause: Password has expired.
Solution: Try to logon to your Nyenrode Portal ((<http://my.nyenrode.nl> or <http://portal.nyenrode.nl>), if your password has expired you will automatically get a form to change your password.
- 2. Problem:** After logon you select an information source and get another logon screen.
Cause: Your Internet provider uses a special proxy server:
Solution: try to logon via: <https://auth1.xaq.nl:443/GomrulshVec6droa/biOkOzadjoofyijO.php>
- 3. Problem:** After logon you select an information source and get another logon screen.
Cause: Your internet browser cannot run the proxy.pac script
Solution: try using another internet browser: Internet Explorer or Mozilla Firefox
- 4. Problem:** After logon you cannot access and/or you get: 'page cannot be displayed' error.
Cause: Your own (software) or Company firewall is blocking the needed traffic.
Solution: Make sure your computer can connect over port 443 to proxy1.nyenrode.nl.

Still cannot connect to the information sources? Please contact the ICT helpdesk at helpdesk@nyenrode.nl or call: (0346-29)1288.

Extra Information:

One-time browser setting for Mozilla Firefox:

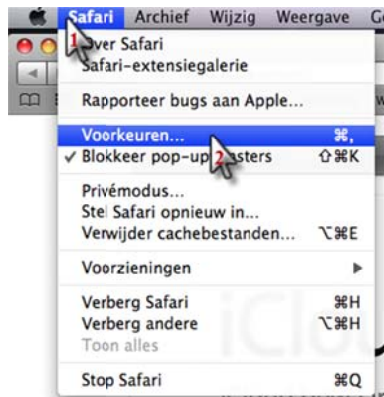
Find Options (under Firefox, Options, Options or under Tools), then Advanced, tab Network, there select 'Settings...' (arrow 1), then select 'Automatic proxy configuration URL:' and fill out exactly: <http://auth1.nyenrode.nl/proxy.pac> (arrow 2). Then click OK 2 times.



Now your browser is set to use our proxy server whenever you need an online information source and you can go to the **How to logon and get access?** on the first page of this document.

One-time browser setting for Safari on a Mac:

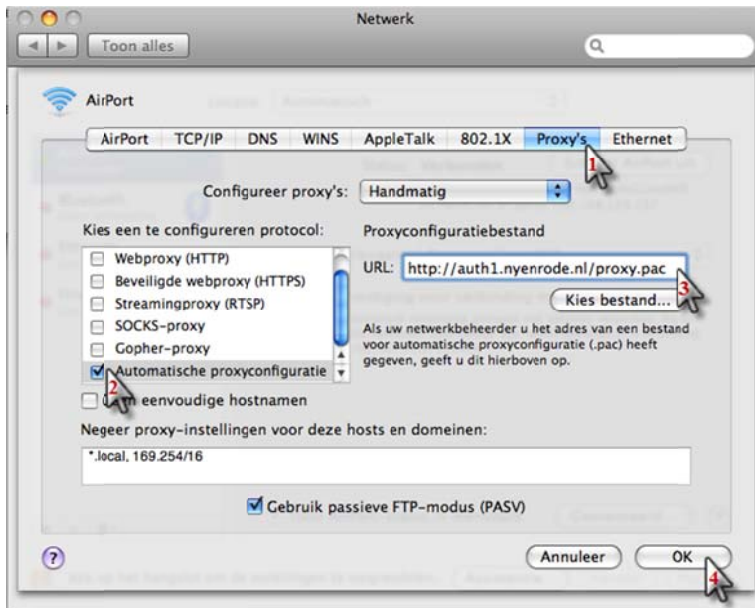
Open Safari, Click in the menu bar on 'Safari' (1) and select 'Preferences' (2) (Voorkeuren):



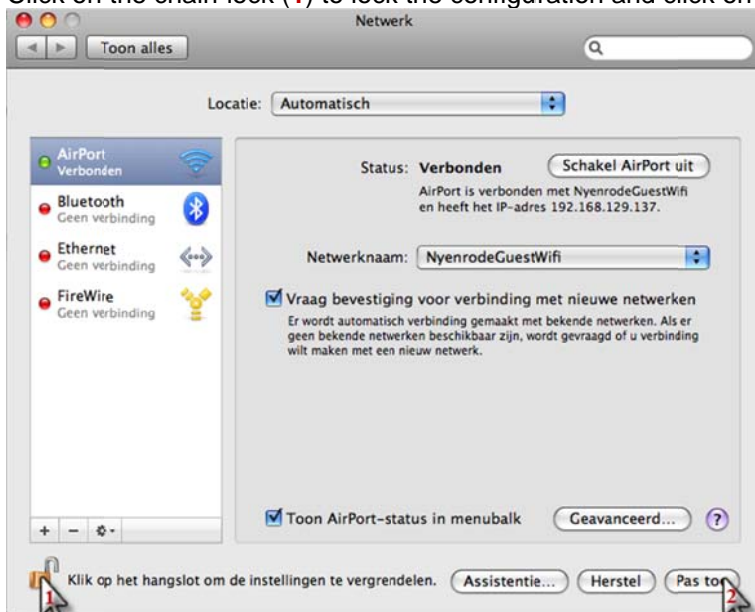
Click on 'Advanced' (1) (Geavanceerd), At 'Proxy's' select 'Change settings' (2) (Wijzig instellingen)



Click on the tab 'Proxy's'(1) and at 'Choose configuring a proxy server' select the option 'Automatic Proxy configuration' (2) (Automatische proxy configuratie) and at 'URL' fill out exactly: **http://auth1.nyenrode.nl/proxy.pac** (3). Click on 'Apply' (4) (OK).



Click on the chain-lock (1) to lock the configuration and click on 'Apply' (2) (Pas toe)



Now your browser is set to use our proxy server whenever you need an online information source and you can go to the **How to logon and get access?** on the first page of this document.

For questions regarding library website and information sources, please contact the Nyenrode library: library@nyenrode.nl or call: (0346-29)1310

For ICT questions, please contact the helpdesk: helpdesk@nyenrode.nl or call: (0346-29)1288.

-- Nyenrode ICT Services --